

**BRENT COUNCIL**

**Wates**

# **PROJECT IMPACT REPORT.**

**2019 - 2023**



# INTRODUCTION.

I am delighted to share with you some of the amazing community activities our team have delivered across Brent in support of our social value commitments. Throughout the duration of this contract, providing support and development opportunities to Brent residents has remained our main objective. We hope that the impact we make on these communities through investments in education, local businesses, improved employability, and local charities leave a positive legacy for the people who call Brent home.



**James Gregg**  
**Regional Managing Director**

We are constantly engaging with community partners to ensure the impact of our activity benefits those who need it most. This activity and value have been delivered by colleagues within the service; their commitment is the driving force behind our community-based activity. We have achieved so much since the beginning of this partnership and will continue to make a significant difference to deliver sustainable value for Brent Council.



**Dan Watson**  
**Divisional Manager**



**VALUE OF CONTRACT:**  
**£160M INVESTMENT BETWEEN PARTNERING CONTRACTORS**

**PROJECT:**  
**IN 2014, WE WERE APPOINTED AS BRENT COUNCIL'S ASSET MANAGEMENT PARTNER TO CARRY OUT A TEN-YEAR REPAIRS AND MAINTENANCE CONTRACT HELPING TO INVEST IN AND IMPROVE HOMES ACROSS BRENT.**

# ACHIEVEMENTS.

SINCE THE CONTRACT COMMENCED IN 2014, WE HAVE CARRIED OUT THE FOLLOWING WORKS IN HOMES AND COMMUNAL SPACES MANAGED BY BRENT HOUSING:



**2,500**  
KITCHEN AND BATHROOM  
REPLACEMENTS



**950**  
WC REPLACEMENTS



**3,500**  
FIRE DOORS



**8,200**  
ELECTRICAL  
TESTING



**800**

FIRE SAFETY  
WORKS TO  
PROPERTIES  
WITH NO  
COMMUNAL  
AREA

**1,200**

FIRE SAFETY  
WORKS TO  
COMMUNAL AREAS



**1,500**  
WINDOW  
REPLACEMENTS



**1,200**  
NEW ROOFS



**20**  
ROADS  
RESURFACED



**45**  
PLAYGROUNDS  
SURVEYED AND  
MAINTAINED



**400**  
PROPERTIES WITH  
DISREPAIR CLAIMS



**41**

FIRE SAFETY  
WORKS IN HIGH  
RISE BLOCKS

WE LOOK FORWARD TO  
ENHANCING ADDITIONAL HOMES  
FOR THE BENEFIT OF BRENT  
COUNCIL RESIDENTS IN THE  
UPCOMING MONTHS.

# INVESTING IN SKILLS AND EMPLOYMENT.

We know that we have a wider role to play to address unemployment in the communities in which we work, as well as add value beyond construction. On this contract, we have offered a large scope of opportunities including pre-employment support, work experience and job offers. We are committed to employing a local workforce wherever possible and currently directly employ local people and those from the surrounding area on this contract, both in our office and on site. Our supply chain are also encouraged to employ local people.



**160 PEOPLE**

HAVE BENEFITTED FROM EMPLOYMENT AND TRAINING INITIATIVES



**13,671**

TRAINING/EMPLOYMENT WEEKS CREATED



**27,326 HOURS**

HAVE BEEN INVESTED IN EMPLOYMENT AND SKILLS ON THIS PROJECT



**18 APPRENTICES**

EMPLOYED ON THIS PROJECT

**£1,502,903**

THE VALUE OF OUR INVESTMENT INTO SKILLS AND EMPLOYMENT

**£1,082,460**

TOMs SOCIAL VALUE DELIVERED FROM SKILLS AND EMPLOYMENT ON THIS PROJECT

## BRENT COUNCIL JOBS FAIR

We attended Brent Council's jobs fair at Wembley Stadium to support job seekers with employability advice and information on our apprenticeships and training programmes. There were over 6,000 attendees present.

**“ Events such as these are a fantastic platform to showcase future career paths to the next generation across a variety of sectors. We are passionate to represent the construction industry at such events and promote the fantastic career paths and job opportunities available for local people in Brent seeking employment. ”**

**Christina Byrne**  
Regional Managing Director

## WEMBLEY JOBS FAIR

We have continued to attend the annual Wembley Jobs Fair at Wembley Stadium. On 19 July, we were joined by over 4,000 job seekers, including those interested in early careers opportunities.

**“ Of all the jobs fairs we attend; Wembley is by far the most well attended. The event management has been exceptional and of very high standard. ”**

**Christina Byrne**  
Regional Social Value Manager



## GOOD WORK STANDARD AND LONDON LIVING WAGE

We have been working to promote the Mayor's Good Work Standard and the London Living Wage in Brent, which has on average some of the lowest salary bases and highest poverty rates in London. It's a core priority of Brent Council to tackle these poverty issues to improve the lives of all residents. One of the ways we can help to do this is by working with Brent businesses to ensure our residents can access quality jobs locally. As a local business in Brent, we were invited to discuss these important issues of pay and poverty, which have a widespread impact across the Borough.



# INVESTING IN EDUCATION.

During the inception of this project, we have invested in programmes to help educate and provide opportunities for local people, leaving a legacy in the community and supporting the local economy.



**3,173 STUDENTS**  
SUPPORTED BY OUR EDUCATION  
ACTIVITIES AND PROGRAMMES  
ON THIS PROJECT



**£203,954**  
SOCIAL VALUE DELIVERED THROUGH  
IMPROVED EMPLOYABILITY OF YOUNG  
PEOPLE ON THIS PROJECT

## EDUCATIONAL EVENTS

### MAKING THE LEAP INSIGHT DAY

We hosted an Insight Day for Making the Leap, a Brent based charity that support adults with career guidance. Ryan Collymore, Head of Housing Property Services at Brent Council, joined us to talk about his career and growing up in Brent. Ryan's experience and personal circumstances resonated with many present and it was clear that he inspired those in attendance.

**“ Thank you for hosting such an engaging and insightful afternoon for our young people! They all left feeling positive and inspired. It would be great to collaborate again, as I'm sure future cohorts would benefit from sessions like this. ”**

**Natalie Ademakinwa**  
Training Manager, Making the Leap

**“ It was great to meet with the next generation. I feel incredibly lucky to have that Brent connection. ”**

**Ryan Collymore**  
Head of Housing Property Services,  
Brent Council



### CREST ACADEMY AND NEWMAN CATHOLIC COLLEGE CAREERS FAIRS

We have attended careers events at both Crest Academy and Newman Catholic College, engaging with a combined number of over 1,500 students.

**“ Thank you so much for attending the careers fair last week. We're really pleased with the way it went and have had great feedback from both schools and students. ”**

**Janet Macleod**  
The US Charitable Trust



## ENVIRONMENTAL AWARENESS

### ZERO CARBON SCHOOL PROJECT

Throughout 2022 and into 2023, we fully funded a £2,300 Zero Carbon project at Kingsbury Primary School. The purpose of the project was to develop participating pupils' knowledge of climate change and support pupils into taking action to reduce carbon emissions. We also aimed to support teachers to implement whole school actions to tackle climate change and to bring climate and nature into their lessons, and support schools into running community events on how to reduce carbon emissions on an individual and community level.

The Green Schools Project is an organisation funded by us to help schools embed climate change and become more sustainable. They delivered an introduction assembly and two teacher training sessions for Kingsbury Primary School. Their training sessions are designed to help all staff incorporate climate and nature education confidently into their lessons. The schools are also encouraged to run a community event to showcase the pupils' work and inspire climate action in the wider community.

**“ We must do everything we can to save the planet and our project will help. ”**

**Year 5 pupil,**  
Fryent Primary School

# INVESTING IN EDUCATION.

## WORK EXPERIENCE

### WORK EXPERIENCE STUDENTS

In July 2023, Josh Glenister joined us for a week of work experience. Having learnt about our business from a careers fair we attended, Josh shadowed staff on our Brent contract, displaying a keen interest in becoming a quantity surveyor. Josh also had the pleasure of attending our Leap of Faith charity event.



**“I have very much enjoyed my week at Wates. Thank you for having me.”**

**Josh Glenister**

We also welcomed Devonte, a Brent student, for one week of work experience. Devonte spent time amongst our site managers and supply chain, Mattison Scaffolding Ltd.

**“I just wanted to say thank you again for everything that you did to make Devonte’s placement possible! You are absolutely incredible, and the Making the Leap team and I value everything that you do, so much.”**

**Marlene Anderson**  
Head of Delivery, Making the Leap



**“I picked up lots of skills during the week, such as dealing with administration work and organising appointments for clients. I would like to extend a big thank you to all the staff who helped me during my placement and made me feel so welcome and part of the team.”**

**Devonte**



### WILLESDEN OFFICE WORK EXPERIENCE

In June, we welcomed Making the Leap and a cohort of students from St Claudine’s School in Harlesden, Brent, to a three-day experience in the world of work at our Willesden office. On one of the days we were also joined by two students from St Gregory’s Catholic Science College. Our staff shared their career journeys as well as information about retrofit, green skills, early careers, climate change, and much more. The students had the pleasure of meeting Nadia Khan MA, Dip CIPR from Brent Council who hosted an interactive session focused on Brent Council’s declaration of Climate Emergency Net Zero by 2030.

**“It was a joy to watch the students from St Claudine’s take part and witness how three days have made such a difference in their career journeys.”**

**Marlene Anderson**  
Head of Delivery, Making the Leap



**“These opportunities for young people, their mentors and their families give us so much job satisfaction. The time we invest to mentor these students is vital to them and our business. It’s important that we support the next generation so that they have equal access to opportunities.”**

**Christina Byrne**  
Regional Social Value Manager

# INVESTING IN THE COMMUNITY AND CHARITIES.

Working in partnership across public, private and third sectors presents fantastic opportunities to create social value as well as savings, service improvements and better outcomes. A key thread of our approach is to work with local partners to ensure we build on existing initiatives and create long term sustainable change.

We focus on initiatives where we can make a real difference and can strengthen our relationships with customers, supply chain partners and the local community. We are proud of the added value we have delivered on this project.

## £398,173

**HAS BEEN INVESTED INTO LOCAL CHARITIES/ COMMUNITY CAUSES**

## 1,965 HOURS

**HAVE BEEN INVESTED INTO VOLUNTEERING IN THE COMMUNITY**

## DONATIONS

### COVID-19 DONATIONS

During the Covid-19 pandemic in 2020, we donated 200 care packs, valued at £600, to Kenbrook Residential Care Home and Willesden Court Care Home.

### SUFRA FOOD BANK AND KITCHEN

We have supported Sufra Food Bank and Kitchen since 2013 with renovation work, essential repairs, volunteering, and improvements to their edible garden, so that they can continue to provide vital services in the communities where we work. In December 2022, our site team provided over £400 worth of toys and food and our supply chain donated eight hampers for families throughout the borough, which were hand delivered to Sufra.



### SICKLE CELL CHARITY DONATION

In November 2021 our site team supported Brent Council's senior staff members, who abseiled down Lexington House, with a donation of £15,000 towards the Sickle Cell Charity.



**"I am delighted to see, yet again, how we have supported the residents of one of our long-term collaborative partners in the borough of Brent."**

**James Gregg**  
Regional Managing Director

### BRENT MAYOR'S GALA SPONSORSHIP

We provided £5,000 sponsorship to the Mayor's Gala annual event. Our staff, along with Brent Council staff, enjoyed the gala ball held at Brent Civic Centre.



### JUBILEE DONATIONS

As part of the Queen's Platinum Jubilee celebrations, we donated £200 to The Groves Residents Association to support their funday held in Kingsbury.

### ST RAPHAEL'S BASKETBALL COURT

In September 2022, we provided new flood lighting and resurfaced the basketball court on the St Raphael's estate, costing a total of £14,000.



### EASTER DONATIONS

Over £400 worth of chocolate Easter eggs were donated by our supply chain, Rope Access, to the Young Brent Foundation, an amazing charity that supports young people across the borough.

**"Thank you to Wates and RAIL for the amazing support and donation of Easter eggs. You have made some children in Brent feel happy and valued."**

**Christopher Murray**  
Chief Executive Officer,  
Young Brent Foundation



# INVESTING IN THE COMMUNITY AND CHARITIES.

## CHARITY EVENTS

### COMMUNITY ACTION DAY IN CRICKLEWOOD

We joined forces with Brent Housing staff, Veolia, and The Conservation Volunteers for a community action day on the CAM estate in Cricklewood. We cleared weeds and overgrown hedges, built new raised planters, donated two skips and supplied topsoil. We invested over £5,000 in total for the event. Over 25 staff volunteered on the day which showed great collaboration and team building from all who took part.

**“ We would like to thank all the groups of staff volunteers for giving up their time to clear some green spaces and replacing and repairing garden planters around the estate. With the support of these groups, we joined forces, working outdoors collectively as a team, to create a little oasis in this capital city of London. ”**

**Pauline**  
Resident of CAM Estate

**“ Thank you to Wates for contributing to the success of the day by lending us a skilled workforce who kept the whole team going and in high spirits. We could not have completed this project without you. ”**

**Hakeem Osinaike**  
Director of Housing, Brent Council



### COMMUNITY AND CONSERVATION WEEK

Our Community and Conservation Week 2022 ran from the 4 - 8 of July and allowed employees to volunteer at a community or environmental project. In partnership with The Conservation Volunteers, we identified over 20 volunteering spaces exclusive to our staff with the focus on creating greener, happier, and healthier communities. Our Brent team and supply chain volunteered their time to plant some flowers and tidy up the communal gardens at Cavendish Close in Kilburn.

During Community and Conservation Week 2023, our Brent team, alongside our supply chain, cleared a very overgrown communal garden at a supported living scheme in Wembley. The garden, managed by Brent Council, took the team a few days to clear. We donated a skip to remove all waste safely and responsibly from the site.



**“ Thanks to our supply chain from DK Services Group and TMN Contractors Ltd who supported us on this day, we look forward to returning for some more improvements. ”**

**Christina Byrne**  
Regional Social Value Manager

### MEET THE BUYER EVENT

We attended Brent Council's Meet the Buyer event, where we got to meet new and existing suppliers as part of Brent's commitment to supporting the local economy.



# INVESTING IN THE COMMUNITY AND CHARITIES.

## CHARITY EVENTS

### WATES FIRST EVER MIYAWAKI FOREST

On 1st December 2022, alongside Brent Council and Network Homes, we launched the Queen Elizabeth II Platinum Jubilee Forest, our first ever Miyawaki Forest, in the heart of King Edwards VII Park. We came together with students from Park Lane Primary School, Brent Council, and The Conservation Volunteers, to plant 650 new trees.



The project is designed to use species of trees that would occur naturally in the area and that work together to create a diverse, multi-layered forest community. One of the most effective tree planting methods for creating forest cover quickly on degraded land, the Miyawaki method sees trees planted at a high density to create a resilient and thriving forest ecosystem.

**“Tree planting is fantastic. Not only does it offset carbon emissions, but it also creates more vibrant and beautiful spaces that all residents can be proud of. Thank you to all the amazing volunteers and organisations who have worked tirelessly to bring this project to life.”**

**Councillor Krupa Sheth**  
Cabinet Member for Environment,  
Brent Council

**“It’s vital that we look beyond homes to seek out innovative ways to positively impact the environment and make a difference to the wider community. Our donation of £6,500 alongside the volunteering hours are part of our wider social value commitments within the borough.”**

**James Gregg**  
Regional Managing Director

### MIYAWAKI FOREST FIRST SPRING MAINTENANCE

Following the launch of our very first Miyawaki Forest in December 2022, our staff volunteers, along with our charitable partners, carried out the first spring maintenance of the trees. The planting looked healthy with around 50% of the trees now in leaf. Only one or two trees look as if they may have died, which is well below the expected mortality rate of 10%.



### MENTAL HEALTH AWARENESS WEEK

In May 2023, to raise awareness of mental health, our Brent team and Brent Council staff took some ‘TIME OUT’ for a wellbeing basketball game at St Raphael’s basketball court in Wembley. The team had an amazing afternoon, and everyone got involved in some healthy competition. We collaboratively raised £115 for the James Bulger Foundation.

### LEAP OF FAITH CHARITY EVENT

On 28th July 2023, our staff, supply chain partners and colleagues from Brent Council abseiled and bungee jumped from a crane to raise money for the Jason Roberts Foundation. The Jason Roberts Foundation is a Brent based charity that supports young people by investing in the local community, aiming to change the outcomes of the most marginalised communities in the UK and Caribbean. We donated £6,800 for the cost of the crane and raised over £7,000 to go directly to the Foundation.



**“I am writing on behalf of our Board of Trustees, and everyone at the Jason Roberts Foundation, to thank you for your hard work in organising the ‘Brent Leap of Faith’ charity event. I am delighted to have been able to attend what was such a highly successful event, and we would like to thank everyone involved, particularly those who were brave enough to abseil or bungee jump! The funds raised will go a long way in enabling us to continue supporting the local community to access sports provision and wraparound services.”**

**Otis Roberts**  
CEO, Jason Roberts Foundation

**“The Foundation is a wonderful charity deeply embedded in our community here in Brent, it does so much to combat racism and inspire the next generation of young people. Many thanks to everyone from Brent Council and Wates who supported this event and helped us to raise over £7,000.”**

**Councillor Dr Gwen Grahl**  
Lead Member for Children Young People and School, Brent Council



# INVESTING IN THE LOCAL ECONOMY.

Trading with the social enterprise sector is a key priority for us. We aim to trade £25m with the sector by 2025 and to work with at least one social enterprise on every contract. During Years 7-10 of this contract, we have engaged with three social enterprises who provide work placements and training for people with disabilities and other social or economic needs.

## £23,322,505

HAS BEEN SPENT WITH SME BUSINESSES ON THIS PROJECT

## £15,178,667

ECONOMIC BENEFIT HAS BEEN GENERATED FOR THE LOCAL COMMUNITY AS A RESULT OF THIS SPEND

## OVERALL SOCIAL VALUE HIGHLIGHTS

Measuring social value can be a combination of outcomes delivered and stories received. It demonstrates the return on the investment you are making from improving homes to investing in the employability of young people, supporting initiatives, or establishing relationships with social enterprises. We use a range of methods to assess the social value of the programmes we deliver, ranging from interviews with delegates to a more robust form of social return on investment calculations.

## £25,981,928

TOTAL ECONOMIC, ENVIRONMENTAL AND SOCIAL VALUE GENERATED ON THIS PROJECT

## £12,721,197

TOTAL TOMs SOCIAL VALUE GENERATED THROUGH THIS PROJECT

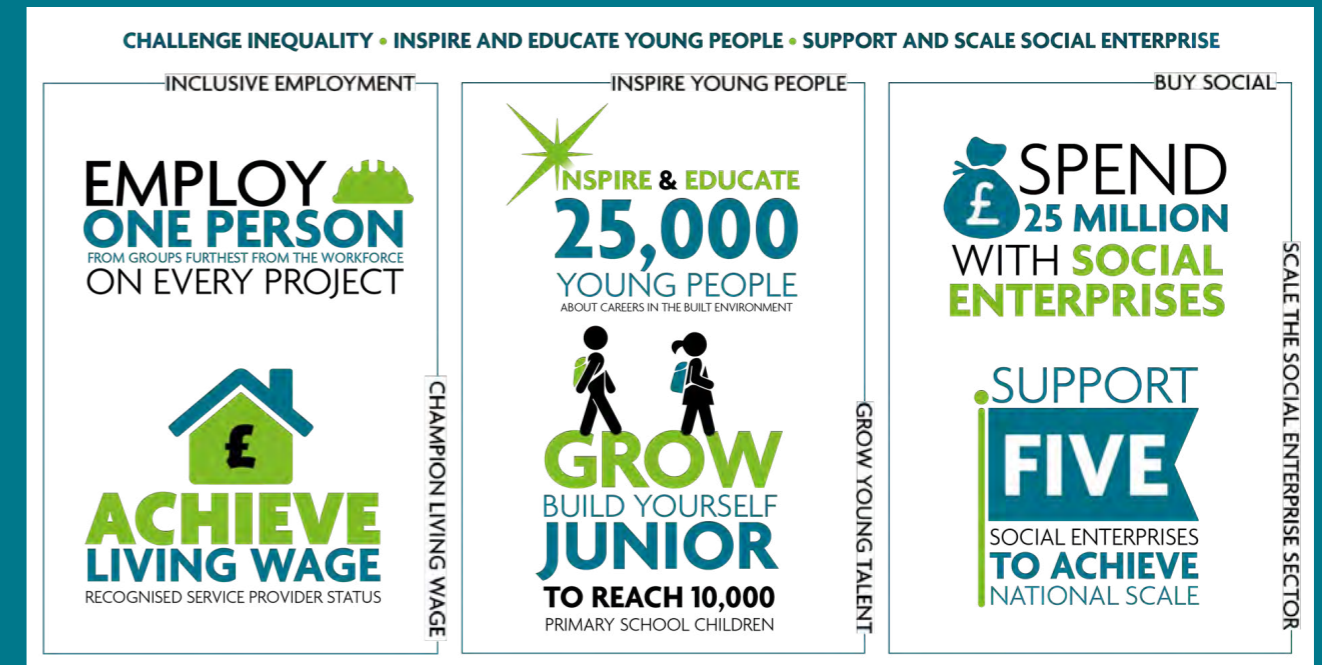


**“ We take pride in the social value initiatives we’ve undertaken over the past few years and the positive impact we’ve achieved in collaboration with Brent Council. Our commitment to enhance community assets and broaden employment and training prospects remains strong. We are enthusiastic about the ongoing partnership with the London Borough of Brent as we endeavour to extend our legacy throughout the upcoming contract year. ”**

**Christina Byrne, Regional Social Value Manager**

## FOCUS ON 2025

Our investment in local communities focuses on key strategic themes, underpinning our purpose to create the places, communities, and businesses of tomorrow. Here are our business objectives to achieve by the year 2025.



**BRENT COUNCIL**



# **PROJECT IMPACT REPORT.**

**2019 - 2023**

**FOR MORE INFORMATION ON WATES SOCIAL VALUE,  
PLEASE CONTACT THE SOCIAL VALUES TEAM:**

CHRISTINA BYRNE – REGIONAL SOCIAL VALUE MANAGER

**[christina.byrne@wates.co.uk](mailto:christina.byrne@wates.co.uk)**

Have you seen our Wates Community Learning Portal?  
Over 50 Free Accredited Level 1 and 2 Accredited Training

